



BENJAMIN SQUARE SHOPPING CENTER

2132-2138 NW 7 Highway, Blue Springs, MO



LEASE RATE: \$12/SF NNN | 1,675 SF END CAP

DEMOGRAPHICS

	1 mile	3 miles	5 miles
Estimated Population	9,404	47,074	90,259
Avg. Household Income	\$117,869	\$112,955	\$111,814

- Former Church
- Ample parking
- Easy access from 7 Highway
- Co-tenants include Berkshire Hathaway, The Pizza Place, and more



CLICK HERE TO VIEW MORE LISTING INFORMATION

For More Information Contact:

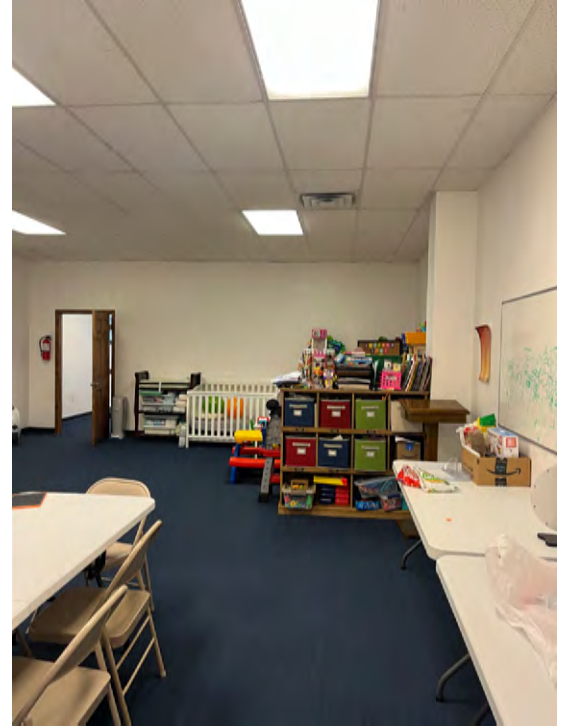
KARSYN SMITH | 816.412.7372 | karsynsmith@blockandco.com

DANIEL BROCATO | 816.412.7303 | dbrocato@blockandco.com

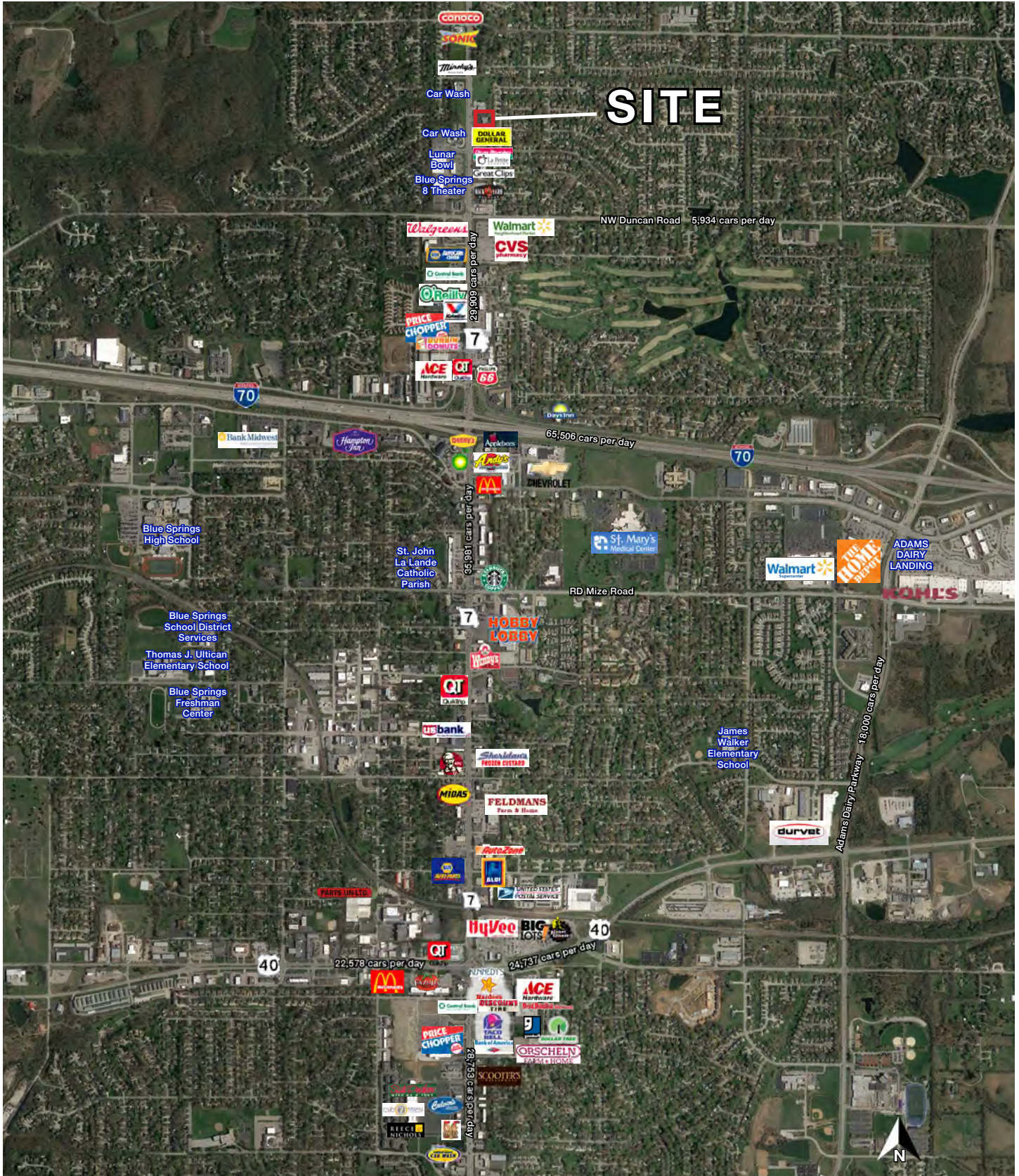
Exclusive Agents



PHOTOS

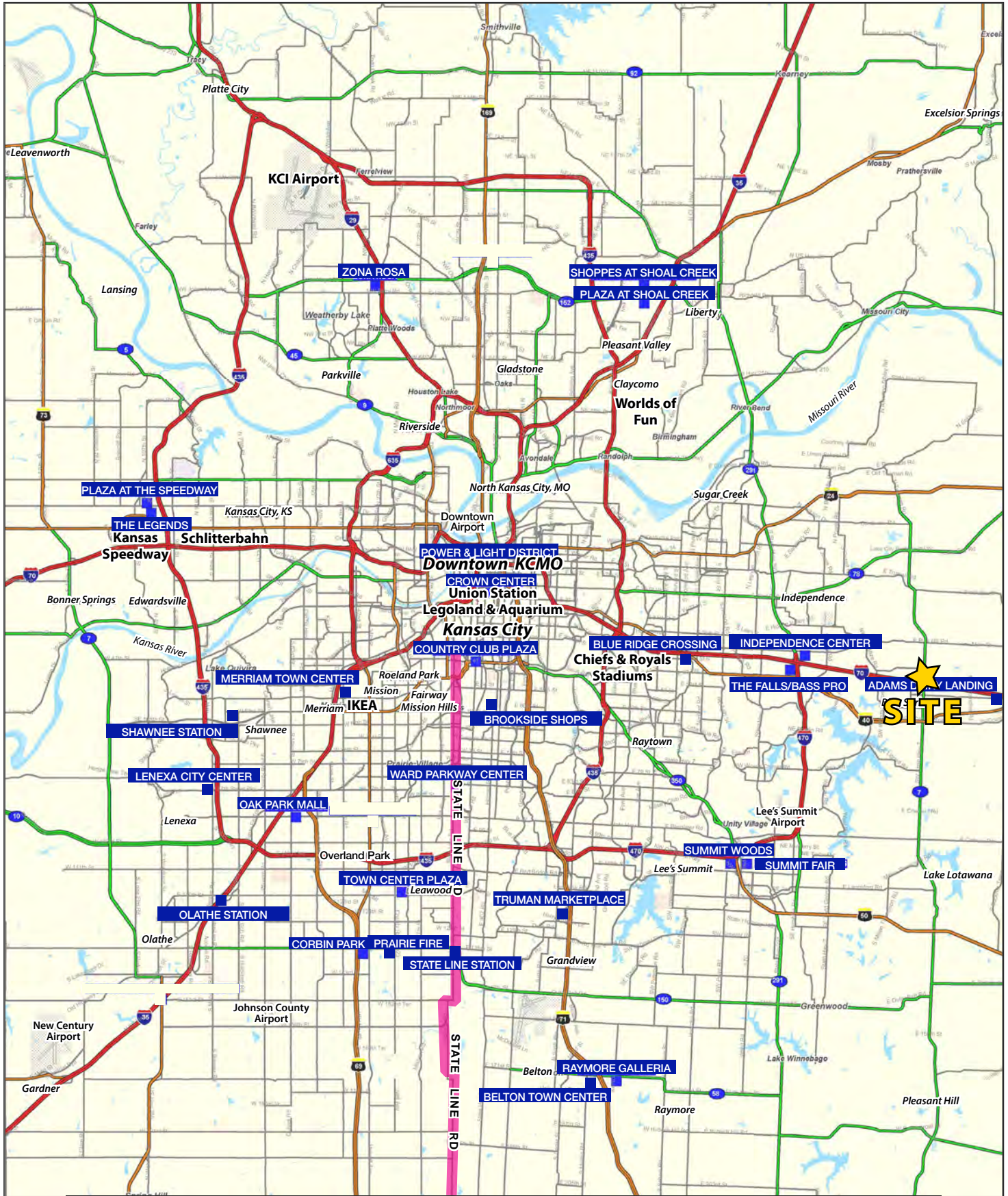


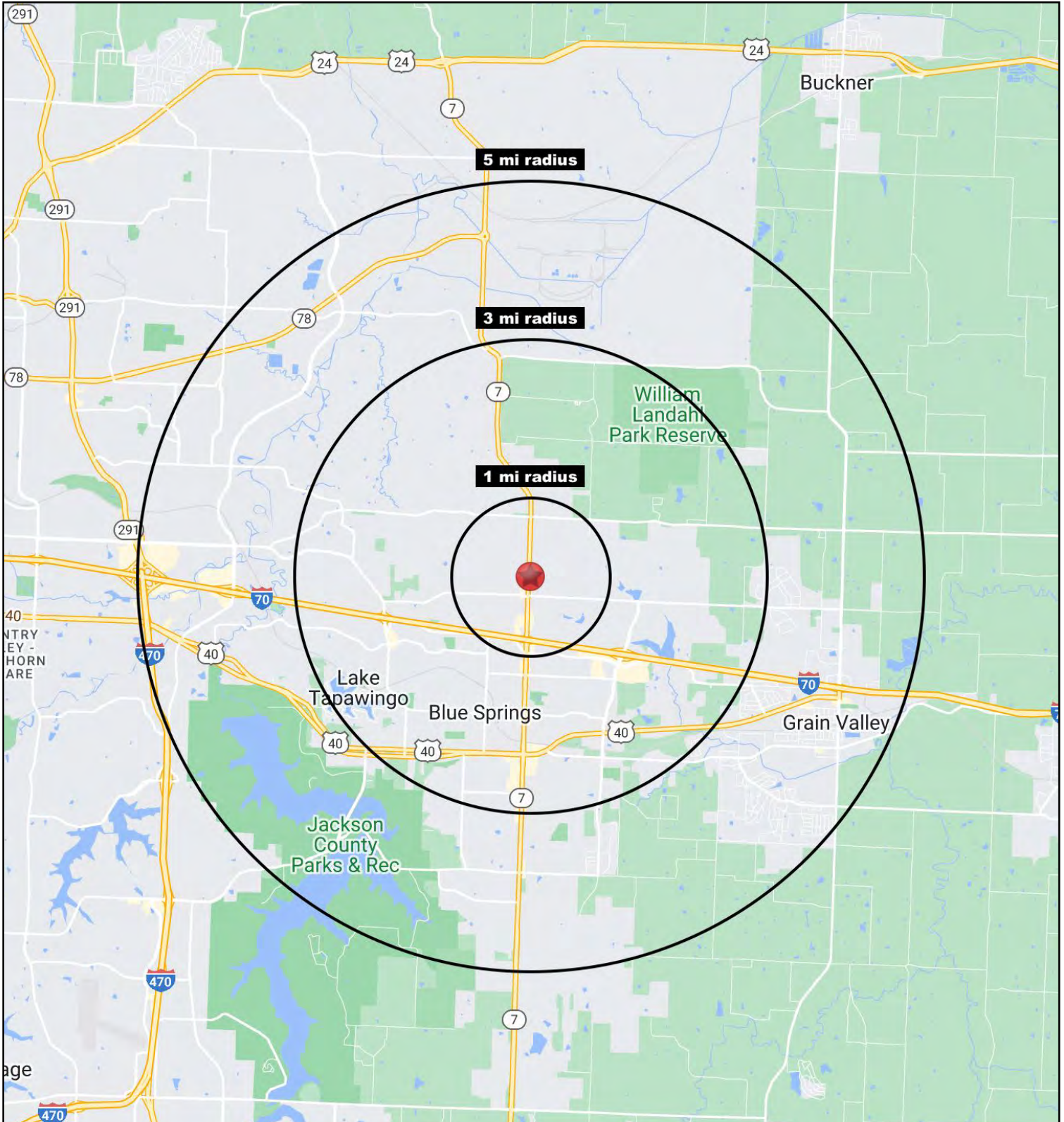
AERIAL



BENJAMIN SQUARE SHOPPING CENTER

2132-2138 NW 7 Highway, Blue Springs, MO







BENJAMIN SQUARE SHOPPING CENTER

2132-2138 NW 7 Highway, Blue Springs, MO

2132-2138 NW Hwy 7 Blue Springs, MO 64014	1 mi radius	3 mi radius	5 mi radius
Population			
2023 Estimated Population	9,404	47,074	90,259
2028 Projected Population	9,376	47,453	94,033
2020 Census Population	9,318	47,214	89,932
2010 Census Population	8,981	43,707	79,780
Projected Annual Growth 2023 to 2028	-	0.2%	0.8%
Historical Annual Growth 2010 to 2023	0.4%	0.6%	1.0%
2023 Median Age	38.5	36.4	36.1
Households			
2023 Estimated Households	3,507	17,873	34,296
2028 Projected Households	3,448	17,800	35,228
2020 Census Households	3,425	17,698	33,742
2010 Census Households	3,311	16,424	29,845
Projected Annual Growth 2023 to 2028	-0.3%	-	0.5%
Historical Annual Growth 2010 to 2023	0.5%	0.7%	1.1%
Race and Ethnicity			
2023 Estimated White	80.1%	78.9%	80.1%
2023 Estimated Black or African American	10.2%	10.9%	10.0%
2023 Estimated Asian or Pacific Islander	1.5%	1.7%	1.6%
2023 Estimated American Indian or Native Alaskan	0.4%	0.4%	0.4%
2023 Estimated Other Races	7.8%	8.2%	8.0%
2023 Estimated Hispanic	6.8%	6.7%	6.6%
Income			
2023 Estimated Average Household Income	\$117,869	\$112,955	\$111,814
2023 Estimated Median Household Income	\$87,678	\$84,354	\$84,774
2023 Estimated Per Capita Income	\$43,982	\$42,920	\$42,530
Education (Age 25+)			
2023 Estimated Elementary (Grade Level 0 to 8)	0.8%	1.0%	1.2%
2023 Estimated Some High School (Grade Level 9 to 11)	2.9%	3.8%	3.4%
2023 Estimated High School Graduate	22.0%	27.8%	29.3%
2023 Estimated Some College	25.0%	24.7%	24.1%
2023 Estimated Associates Degree Only	9.1%	8.9%	8.7%
2023 Estimated Bachelors Degree Only	27.6%	22.6%	22.0%
2023 Estimated Graduate Degree	12.7%	11.2%	11.3%
Business			
2023 Estimated Total Businesses	348	1,651	2,936
2023 Estimated Total Employees	1,995	12,545	28,923
2023 Estimated Employee Population per Business	5.7	7.6	9.9
2023 Estimated Residential Population per Business	27.0	28.5	30.7

©2023. Sites USA. Chandler, Arizona. 480-491-1112 Demographic Source: Applied Geographic Solutions 4/2023. TIGER Geographv - RS1

